



THE MADISON SCENE

WINTER 2019

Social + Emotional + Academic

Madison's Vision, Mission
and Core Values

INSIDE: IB Teacher &
Student of the Year

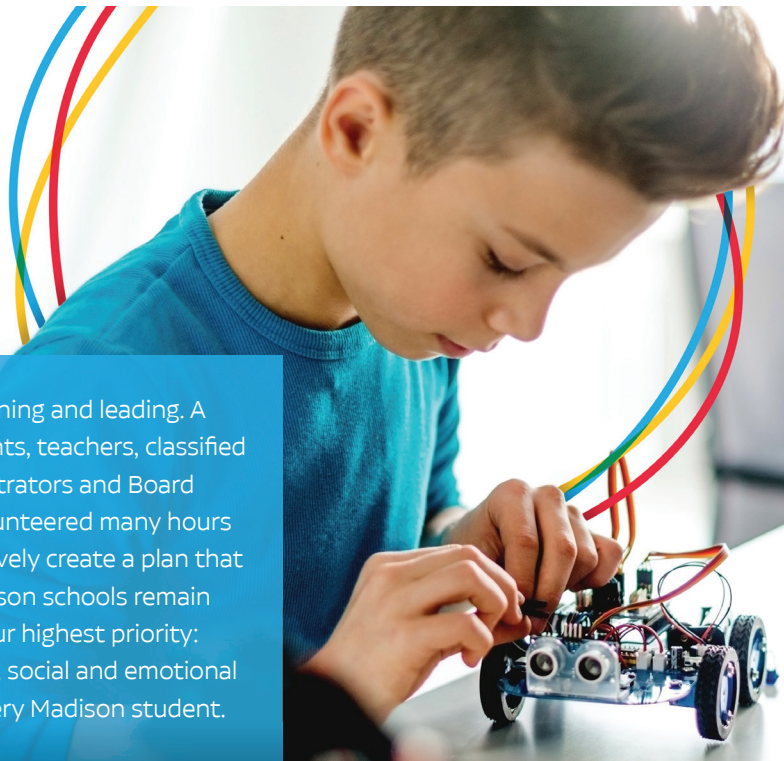
Bond and Override
Thank You and Update

Madison
Giving Back



Madison's

Vision, Mission & Core Values



We, as the Madison Elementary School District Governing Board and superintendent, are proud to share our Vision, Mission and Core Values that serve as the anchor for the District's commitment to excellence. Through a new strategic plan, Madison School District commits to excellence in

teaching, learning and leading. A team of parents, teachers, classified staff, administrators and Board members volunteered many hours to collaboratively create a plan that ensures Madison schools remain focused on our highest priority: the academic, social and emotional growth of every Madison student.

Our Vision What we strive for every day:

Inspiring passion for learning and leading in an ever-changing world.

Our Mission What we focus on every day:

To foster success for all through dynamic, engaging and relevant learning experiences, focusing on students' academic, social and emotional growth.

Our Core Values What we believe and stand for:

Student Focused – We commit to doing what is best for students as the driving force behind all decision making.

Leadership – We provide opportunities for all to contribute to the success of the organization.

Innovation – We develop curiosity, creativity and critical thinking to drive dynamic learning for all.

Growth – We commit to continuous academic, social and emotional learning.

Empathy – We build trusting relationships through understanding and caring for others.

Diversity – We champion the inclusion of each individual, accepting their differing points of view and nurturing their unique gifts.

In the Madison School District, we focus on the whole child. We care about the education, well-being and success of every student. Our new Vision, Mission and Core Values are strong and future-focused. In partnership with our families, we are committed to excellence while ensuring every child feels safe, has a sense of belonging and knows that he/she is loved.

MADISON ELEMENTARY SCHOOL DISTRICT GOVERNING BOARD

Matt Gress, Governing Board President
Scott Holcomb, Governing Board Clerk
Mitra Khazai, Governing Board Member
Marcus Osborn, Governing Board Member
Sarah Speer, Governing Board Member

Madison Quick Facts

17%

In the past 3 years, the average teacher salary in Madison increased by **17%**

6 IN 1

Madison has schools of choice with **6 different signature programs** in 1 school district



Earned **highest Advanced Index of Education Quality score for any education institution**, internationally

Arizona's Top IB Teacher and Student

Sixteen-year teaching veteran Julia Hubbs of Madison Simis recently was named Arizona IB Primary Years Programme Teacher of the Year. Her former student, Sophie Garcia, is the 2019 recipient of the Arizona IB Primary Years Programme Student of the Year award during her time as a fourth-grade student at Simis Elementary.

“The IB program is so amazing because it’s a combination of teaching on a global scale through inquiry, incorporating character education and practicing 21st-century skills like research and cooperative work,” Julia said.

Sophie and her friends started “The Cleaning Committee” to keep the school campus clean. Kids could participate with their friends and work together during their social time to clean the campus.

“I am honored to receive the award and excited to tell my classmates who were involved last year with TCC,” Sophie said.

Sophie, now in fifth grade at Madison Meadows Middle School, aspires to be a digital animator, creating videos or movies.



Thank you!

Voters in the Madison School District have generously passed both the bond and the continuation of a 15% Maintenance & Operations Override. The Maintenance & Operations Override provides additional funding above that provided by the State funding formula. This funding supports the operations of the District such as salaries, curriculum, and student and staff support.

The bond provides the district additional funding for capital items such as school renovations and building improvements, school security enhancements, equipment and technology and school buses. Madison School District students, families, teachers, leadership and Board are incredibly grateful for the community’s continued investment in the future of Madison students.

How students will benefit



Construction & renovation of school buildings



Safety & security improvements



Technology improvements



School buses & transportation vehicles



Recruitment & retention of highly qualified education professionals



Energy efficiency improvements



Madison Giving Back

Students and families at Madison continue to look for thoughtful ways to support local families in need within the Madison School District and throughout the community. Recent food drives and turkey trots made a tremendous impact.

A few highlights:



Madison Rose Lane's annual Food Drive and Turkey Trot invited the community to **help feed 35 local families**. Rose Lane fourth-graders organized both events, learning empathy as they packed boxes and planned meals for families in need.



Madison No. 1's annual Thanksgiving Caring and Sharing Food Drive **helped feed 10 local families**.



Madison Simis' Turkey Trot and Book Fair donations helped feed Madison families, many of whom come from outside the district, as well as those within the larger Phoenix community. **Students learned the incredible impact they can have on children their own age.**



Madison Heights' annual St. Mary's Food Drive collected **more than 1,600 pounds of food** through student and community contributions.



SRP and APS Invest in Madison

Madison schools receive grants throughout the year but two recent awards especially impact students. Through receipt of the SRP Learning Grant, **Madison Park Middle School was awarded \$4,710 to create a Makerspace in the library to enhance classroom experiences in science, math and technology**. This grant will enhance Park's already strong STEAM program by giving even more children hands-on learning opportunities.

Additionally, **through a \$750 grant from APS and the Phoenix Suns, Madison Simis second-graders in Mrs. McCarthy's class learned about, and then raced, solar cars**. The opportunity for outdoor hypothesis testing and experiential learning was enhanced through a special visit from an APS engineer and the Phoenix Suns Gorilla on race day. These opportunities and others are critical as Madison focuses on the overall wellness of students to develop strong academic, mental and leadership skills.



Madison Families Lift District

11 Ways to Support Students and Connect at Madison

Being a Madison family is more than just dropping off and picking up students. Madison families have a tremendous impact on our schools and can seize on opportunities to connect with each other to lift Madison to new heights. Here are ways Madison families can enhance students' academic, social and emotional development:

1 **Register to volunteer** at your child's school, in the classroom, or on a field trip.

2 **Share your love of reading with a student once a week** for an hour through the OASIS Tutoring Program.

Contact Kim Gullo at Madison Camelview at (602) 664-7285 or kgullo@madisoned.org.

3 **Attend school-sponsored family events**, such as Math Night or Fall Carnivals.

Calendar: madisonaz.org/calendar

4 **Attend a monthly free Parent University Engagement Night** focused on topics for parents to help support their student's social/emotional wellness and success.

Call (602) 664-7927.

Visit madisonaz.org/parent-university

5 **Join Madison's strong and vibrant Parent-Teacher Organizations at each school.**

Visit madisonaz.org/parents/get-involved

6 **Join a Dad's Club** for projects like Christmas-tree recycling, installing shade structures on playgrounds and a hilarious '80s party fundraiser.

7 **Contribute to the Madison Education Foundation** and/or take part in one of several events they sponsor throughout the year.

Visit madisoneducationfoundation.org

8 **Become an Art Masterpiece volunteer** to share your love of art with families and students.

9 **Represent your school as a Madison Advocate**, assessing legislative issues for impact on public education.

Contact Karen Kruse at karen@krusegroupaz.com.

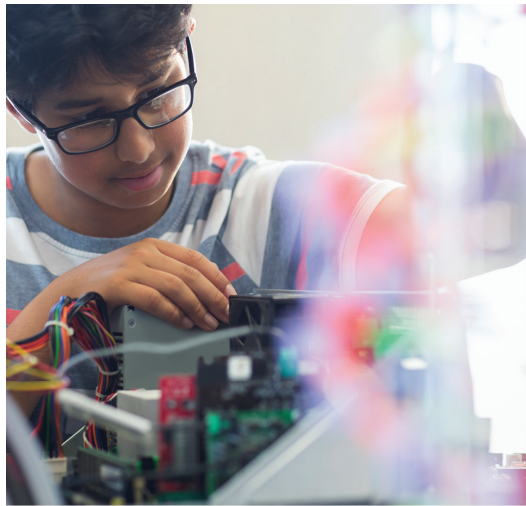
10 **Donate to the Tax Credit program** and help a Madison school in need.

Visit madisonaz.org/community/tax-credit

11 **Take family and friends to the Phoenix Art Museum.** Madison families have access to free family passes to experience the museum for themselves. Check with the front office at your child's school to borrow the pass.



Madison schools are strengthened by the countless parents and volunteers who share time and talents to make a lasting impact on our students. Meet with school administration for additional customized connections.




2020-2021 Open Enrollment Begins

Open Enrollment begins December 2, 2019, for the 2020-2021 school year. Submit applications for enrollment as soon as possible before waiting lists become too long for the Madison schools. Visit madisonaz.org/enrollment.


1 **Madison Camelview Elementary** (Preschool-4th)

Led by principal Hilary O'Brien, recipient of the Rodel Exemplary Principal Award, Madison Camelview focuses on STEAM (Science, Technology, Engineering, Arts and Math) integration. Dedicated faculty and PTO, strong sense of community and students focused on growth mindset have made Camelview a top choice among parents for more than 20 years.

 **Schedule a tour:** (602) 664-7200
2002 E. Campbell Ave., Phoenix, AZ 85016

2 **Madison Heights Elementary** (Preschool-4th)

Madison Heights offers two signature programs: Spanish Immersion and REACH—Profoundly Gifted. Heights teaches profoundly gifted children at a pace of two grade levels ahead. A self-contained program keeps children from being bored or bullied as they learn with students their own age and academic ability. For Spanish Immersion students, certified bilingual teachers are experts in boosting language and literacy development as well as cognitive skills.

 **Schedule a tour:** (602) 664-7800
7150 N. 22nd St., Phoenix, AZ 85020


3 **Madison Rose Lane Elementary** (Preschool-4th)

Madison Rose Lane focuses on the Performing and Visual Arts through a children's choir, band, multimedia art projects and dance classes with performances in the new Madison Center for the Arts. Rose Lane's engaged students excel in their traditional academic subjects, as well, and can become eligible for advanced dance and theater at Madison No. 1 Middle School.

 **Schedule a tour:** (602) 664-7400
1155 E. Rose Lane, Phoenix, AZ 85014

4 **Madison Simis Elementary** (Preschool-4th)

Madison Simis is a modern renovated campus designed to inspire research-based learners. Simis is known for its passionate PTO, award-winning music program and International Baccalaureate® Programme. Simis has had three Arizona IB Primary Teacher of the Year Award recipients plus the Student and Teacher of the Year in 2019.

 **Schedule a tour:** (602) 664-7300
7302 N. 10th St., Phoenix, AZ 85020




5 Madison Meadows Middle School (5th–8th)

A recent National Blue Ribbon School, Meadows’ rigorous International Baccalaureate® Middle Years Programme focuses on the development of students’ intellectual, social, emotional and physical well-being that prepares them for research-based learning, problem solving and success in high school and college.

 **Schedule a tour:** (602) 664-7600
225 W. Ocotillo Road, Phoenix, AZ 85013


6 Madison No. 1 Middle School (5th–8th)

No. 1 Middle School is a Performing and Visual Arts school that also offers a Spanish Immersion Program and REACH—Profoundly Gifted Program for middle school. Students may participate in theater, dance, strings and choir based on their ability rather than their grade level. REACH gifted students develop appropriate social and emotional skills with students their own age while diving deeper in engaging academic areas two grade levels ahead.

 **Schedule a tour:** (602) 664-7100
5525 N. 16th St., Phoenix, AZ 85016


7 Madison Park Middle School (5th–8th)

Park Middle School’s STEAM program prepares bright minds for high school and college success. Students learn to use and manage technology through an interactive multimedia program while engaging in problem-based learning. Community partnerships and STEAM Family Nights share student learning and accomplishments with the community. Park students grow to be communicators, designers, problem solvers and innovators.

 **Schedule a tour:** (602) 664-7500
1431 E. Campbell Ave., Phoenix, AZ 85014

8 Madison Traditional Academy (Preschool–8th)

Madison Traditional Academy is the only Preschool-8th school in the district. Featuring a traditional philosophy, MTA was created as a “school of choice” and has no neighborhood boundaries. MTA’s curriculum features a solid foundation of fundamental and higher-level thinking skills through a structured curriculum. All grade levels receive math instruction at a one-year accelerated level.

 **Schedule a tour:** (602) 745-4000
925 E. Maryland Ave., Phoenix, AZ 85014



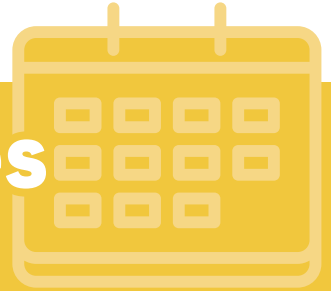
Madison School District
5601 North 16th Street
Phoenix, AZ 85016

ECRWSS
Residential Customer

Non-Profit Org
U.S. Postage
PAID
Phoenix, AZ
Permit #56



Important Dates



Dec. 2	Open Enrollment begins
Dec. 20	End of first semester/teacher planning day – half-day schedule
Dec. 23 – Jan. 3	Winter Break
Jan. 6	School resumes
Jan. 14	Parent-teacher conferences – evening
Jan. 15	Parent-teacher conferences – half-day schedule
Jan. 20	Martin Luther King Day – no school

For a full listing of important dates visit the Madison School District Calendar at madisonaz.org/calendar



Financial Health of Madison



Received the Certificate of Achievement for Excellence in Financial Reporting

from The Government Finance Officers Association for 27 years.



Recently upgraded to Aa1 bond rating from Moody's Investor Service

(one of only seven districts in Arizona to earn this rating).



Madison's tax rates declined each year for 5 years.



facebook.com/MadisonAZ

@MadisonAZ on Twitter

@Madison_AZ on Instagram

Madison Elementary School District does not discriminate on the basis of race, color, national origin, sex, disability, religion or age in its programs or activities. For information regarding discrimination grievances or complaint procedures, contact the District Office at (602) 664-7900.